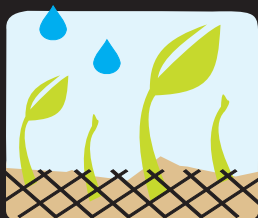


Mat, Inc.  
FLOODWOOD, MINNESOTA

# GREEN GUARD

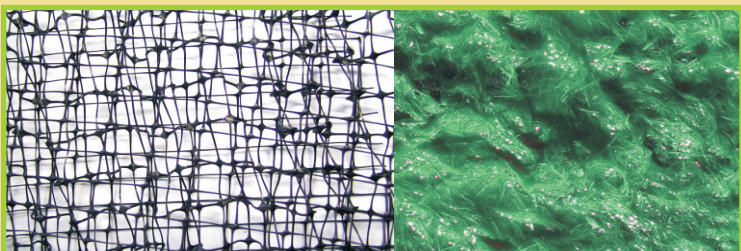
TRM SYSTEM



The Green Guard TRM System® offers the best of two erosion control products to provide slope and channel protection and assist in vegetation establishment.

**One**, Tenax Multimat 100® is designed to provide long term protection for vegetative slopes and swales taking the place of traditional hard armor products such as rock rip rap. Tenax Multimat 100® is a three dimensional turf reinforcement mat (TRM) composed of three layers of extruded bi-oriented polypropylene grids laid upon each other and stitched together with heavy polypropylene yarns. The middle layer is corrugated to create a thick, open matrix designed to promote entanglement with the roots of growing vegetation. The result is an extremely stable vegetative cover, system that provides long term resistance to the hydraulic forces of concentrated flows.

**Two**, Mat, Inc. Flex Guard® is a Fiber Reinforced Matrix (FRM) hydro-mulch engineered with pasteurized wood fibers, dispersible synthetic fibers and exclusive soil bonding agents for immediate and effective erosion protection on challenging terrain even during hard rains. The nontoxic formula maintains fiber loft for impact resistance, air circulation and moisture retention that promotes seed germination and plant growth. Flex Guard® maximizes the time savings and cost efficiencies of hydraulic application, and delivers dependable results from the start.



## Choose Green Guard TRM System® when:

- Exposed soils or severe slopes require maximum erosion protection and permanent cover from wind and rain
- Poor weather is eminent, erosion control is immediate
- Cost-effectiveness, timeliness, results and quality are required
- Sheet and concentrated water flow is expected, and tensile and greater shear values are required

With its accurate chemistry, trust Green Guard TRM System® to produce Easy, Consistent and Reliable results.



## Reliable Features Reduce Overall Costs

### PREVENTS SOIL LOSS IMMEDIATELY

GREEN GUARD TRM SYSTEM® INSTANTLY PREVENTS SOIL LOSS AND PROMOTES PLANT GROWTH ON CHANNELS AND SLOPE APPLICATIONS. THE SYSTEM ALSO PROVIDES LONG TERM PROTECTION FROM WATER VELOCITY AND SHEAR STRESS BY USING STEM AND ROOT REINFORCEMENT ONCE VEGETATION IS ESTABLISHED.

### EFFECTIVE PERFORMANCE

AFTER TENAX MULTIMAT 100® IS INSTALLED, FLEX GUARD® PERFORMS REGARDLESS OF THE APPLICATION CONDITIONS. WET, BARE SOIL OR THUNDERSTORMS IN THE FORECAST WON'T SLOW YOUR SCHEDULE. FLEX GUARD® DELIVERS IMMEDIATE STABILIZING RESULTS EVEN WITHOUT CURE TIME AND PERFORMS AS WELL AS THE ALTERNATIVES.

### ENHANCES VEGETATION ESTABLISHMENT

GREEN GUARD TRM SYSTEM® COMBINES FLEX GUARD® TO TENAX MULTIMAT 100®. THIS COMBINATION FORMS A STRONGLY LOFTED BUT POROUS FIBER MAT MADE OF COUNTLESS GROWTH CHAMBERS. GRASS AND OTHER SELECT SEEDS ACCESS AIR AND MOISTURE FROM INSIDE THE CHAMBERS. THE HIGH-TENSILE CHAMBER STRUCTURES RESIST IMPACT DAMAGE, GUARDING THE EMERGING PLANTS. VEGETATION EASILY PENETRATES THE GROWTH MATRIX TO QUICKLY ENHANCE THE PROJECT'S VISUAL APPEAL. AND THAT MAKES YOU LOOK GOOD, TOO.

### CONFIDENCE

GREEN GUARD TRM SYSTEM® INSTILLS YOUR PROJECT WITH CONFIDENCE BY PROVIDING DETAILED INSTALLATION GUIDELINES THAT CAN EASILY BE FOLLOWED BY EROSION CONTROL CONTRACTORS. WE ALSO PROVIDE TESTING INFORMATION SHOWING HOW THE SYSTEM WILL REDUCE SEDIMENT LOSS AS WELL AS PERMISSIBLE SHEAR AND VELOCITY UNDER VEGETATED AND UN-VEGETATED CONDITIONS. PLEASE SEE DATA CHARTS ON THE REVERSE OF THIS SHEET.

Contact Mat, Inc. At 1-888-477-3028  
or visit our website at [www.matinc.biz](http://www.matinc.biz)  
to learn more about how  
Green Guard TRM System®  
can help you hold your ground.



Mat, inc. is a directing member of the  
Erosion Control Technology Council (ECTC).

## FLEX GUARD® INGREDIENTS:

WOOD FIBER CONTENT.....	>82±1%
GUAR GUM TACKIFIER CONTENT BY WEIGHT.....	<9±1%
SYNTHETIC FIBER CONTENT.....	5±1%
BASIC GREEN DYE.....	<1%
TRADE SECRET.....	<1%
TRADE SECRET.....	<1%
TRADE SECRET.....	<1%

## COVERAGE:

3000-4000 LBS. /ACRE TO ACHIEVE 100% COVERAGE.

"C" FACTOR	6" RAINFALL
FLEX GUARD®	0.005
BARE SOIL	231
PERCENT % OF EFFECTIVENESS	99.5

## FLEX GUARD® COMPOSITION:

ORGANIC MATTER (MIN.).....	94%
INORGANIC MATTER (ASH) (MAX.).....	6%
MOISTURE CONTENT (TOTAL WEIGHT BASE).....	12%±3%
PH AT 3% CONSISTENCY IN WATER SLURRY (AVG.).....	4.8
WATER-HOLDING CAPACITY (MIN.).....	1.2GAL./LB.

## PERFORMANCE

DRYING TIME.....NO CURE TIME REQUIRED  
LONGEVITY.....UP TO 12 MOS.  
\*DEPENDING ON SIGHT CONDITIONS. INCREASED CURE TIME ENHANCES PERFORMANCE

## PACKAGING AND SHIPPING

NET WT. 50 LBS. 22.6 KG. NET DRY WT. 44-45 LBS.  
PACKAGED IN 50 LB. (22.6 KG.) PLASTIC OR MULTI-WALLED PAPER BAGS. AVAILABLE IN PALLETIZED 36 BAG UNITS OR 18 BAG UNITS.

RESULTS CONFIRMED BY THE SAN DIEGO STATE UNIVERSITY SOIL EROSION RESEARCH LABORATORY (SDSU/SERL). TESTING CONDUCTED AUGUST 2006. ASTM 6459-99

## TENAX MULTIMAT 100®

### MECHANICAL PROPERTIES

	ASTM TEST METHOD	UNITS	TYPICAL ROLL VALUE
TENSILE STRENGTH	D 4595	KN/M (LBS/FT)	10 (685) 15 (1027)
THICKNESS	D 5199	MM (IN)	17 (0.67)
MASS/UNIT AREA	D 5261	G/M <sup>2</sup> (OZ/YD <sup>2</sup> )	320 (9.4)
UV STABILITY	D 4355	% STRENGTH RETAINED	85

### PERMISSIBLE VELOCITY

	FLUME TEST 1		
PRODUCT ONLY	"	M/S (FT/S)	4.0 (13)
30 MINUTE, VEGETATED	"	"	5.5 (18)
50 HOURS, VEGETATED	"	"	3.35 (11)

### PERMISSIBLE SHEAR STRESS

PRODUCT ONLY	"	M/S (FT/S)	0.29 (6)
30 MINUTE, VEGETATED	"	"	0.475 (10)
50 HOURS, VEGETATED	"	"	0.29 (6)

### PACKAGING DATA PROPERTIES

	TEST METHOD	NOMINAL VALUE
ROLL DIMENSIONS (W X L)	M (FT)	2.2 x 30.5 (7.2 x 100)
ROLL AREA	M <sup>2</sup> (YD <sup>2</sup> )	67 (80)
ESTIMATED ROLL DIAMETER	CM (IN)	78 (30.5)
ESTIMATED ROLL WEIGHT	KG (LD)	24 (53)

NOTES: 1. FLUME TEST PERFORMED AT AN INDEPENDENT LABORATORY - DATA AND DETAILS AVAILABLE UPON REQUEST.

2. MULTIMAT 100® MEETS REQUIREMENTS OF FHWA FP-03 TRM CATEGORIES TYPES 5.A, B AND C.

TO THE BEST OF OUR KNOWLEDGE, THE INFORMATION CONTAINED HEREIN IS ACCURATE. HOWEVER MAT, INC. CANNOT ASSUME ANY LIABILITY WHATSOEVER FOR THE ACCURACY OR COMPLETENESS THEREOF. FINAL DETERMINATION OF THE SUITABILITY OF ANY INFORMATION OR MATERIAL FOR THE USE CONTEMPLATED, OR ITS MANNER OF USE AND WHETHER THE SUGGESTED USE INFRINGES ANY PATENTS IS THE SOLE RESPONSIBILITY OF THE USER. PRODUCT CERTIFICATION AND MSDS AVAILABLE UPON REQUEST.



**SYNTEC**  
GEOSYNTHETICS EVOLVED

4800 Pulaski Hwy.  
Baltimore, MD 21224  
1-800-874-7437

Contact Mat, Inc. At 1-888-477-3028 or visit our website at [www.matinc.biz](http://www.matinc.biz)  
and learn more about how Green Guard TRM System® can help you hold your ground.

