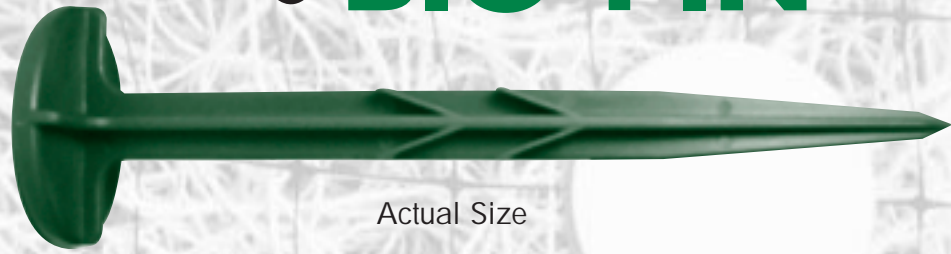


# ROUND TOP BIO-PIN™



Actual Size

## ADVANTAGES

- 100% Biodegradable.
- Can be installed from a standing position when using the Profile Round Top Driver™.
- Has a pull-out strength equal to that of an 8" x 8 gauge staple.
- Has a 1<sup>3</sup>/<sub>8</sub>" round head that holds more netting strands than a staple.
- Easy and fast installation.
- Allows for easy visual inspection by engineers.
- Prevents mower damage.
- Safe for environmentally sensitive areas.
- Has up to five times greater surface holding area than a traditional 6" x 11 gauge staple.
- Will drive through hard soils and clay.
- Will last up to one year.

## PACKAGING AND SPECIFICATIONS

- 5" 500/carton 9 lbs.
- Dark green in color



Your Trusted Partner In Soil Solutions™

The Profile Round Top Bio-Pin™ –  
The environmentally safe alternative for  
erosion control matting installations.

FIBRAMULCH  
8711 KEELE STREET  
CONCORD, ONTARIO L4K 2N1

1 888 298-9911

www.fibramulch.com

**FIBRAMULCH**  
HYDRAULIC SEEDING MULCH

ROUND TOP DRIVER™



# ROUND TOP DRIVER™

The Profile Round Top Driver™ is one of the fastest, most efficient means of securing erosion control matting, geotextile fabric, mulch netting and sod ever developed. This easy-to-use labor-saving device is designed to use the Profile Round Top Pin™ and the Profile Round Top Bio-Pin™.

The Profile Round Top Driver™ is a center driven mechanism manufactured from a high impact, lightweight, non-corrosive material designed for long term use. The Profile Round Top Driver™ is a gravity fed device with only one moving part, the plunger. There are no spring recoil devices to replace or jam.

## HOW IT WORKS

1. Drop a Profile Round Top Pin™ or Profile Round Top Bio-Pin™ into the feeder tube.
2. Lift the plunger handle allowing the pin to drop into the center punched gasket.
3. The gasket holds the pin in a vertical position where it awaits the plunging mechanism.
4. The operator then drops the 2.8 lb. plunger with its 4" stainless steel tip, driving the pin into the ground.

## ADVANTAGES

- Saves up to 40% in labor time and costs.
- Operates from a standing position.
- Reduces laborer fatigue.
- Allows operator to secure up to 8 feet of fabric while standing in one center location.
- Jamming is virtually eliminated due to the center driven plunger.
- Lightweight, maintenance-free.
- Works great when securing matting in channels where water is present.



patented



## USES

- Sod Farms
- DOT Projects
- Erosion Control Matting Projects
- Mulch Netting Installation
- Geotextile Placement
- Weed Barrier Installation
- Golf Course Green Covers

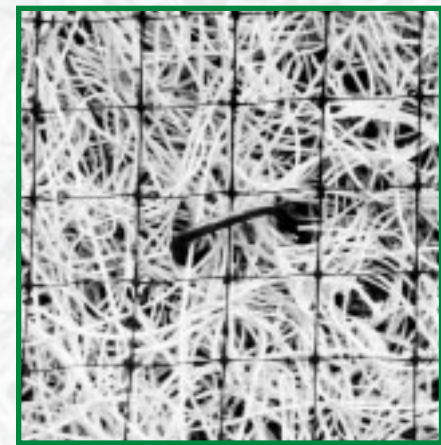
## SPECIFICATIONS

- Material** – High-Impact, light-weight, molded plastic with replacement handles
- Color** – Black
- Height** – 52" to top of handle
- Weight** – 6.2 lbs.

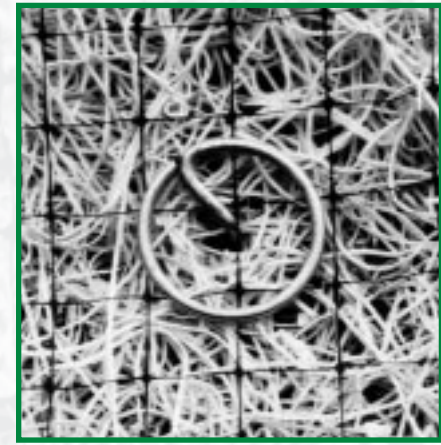


Round Top Driver™

## ROUND TOP PINS™



Typical Staple



Round-Top Pin

The **Profile Round Top Pin™**, when installed with the **Round Top Driver™**, is one of the most advanced products in the industry. It's the only product of its kind for securing erosion control matting, geotextile fabric, mulch netting and sod. The pin is manufactured from an 8 or 11 gauge high-strength steel wire. It measures 6 or 8 inches in length and has a 1 3/8" diameter head on top. This Round-Top head is designed to hold five times the surface area of a typical U-shaped staple. Simply put, more surface area means more holding power.

The patented **Profile Round Top Pin™** will help to reduce labor cost, improve installation and insure the success of your next project.

## ADVANTAGES

- Saves you time and money.
- Eliminates back-breaking staple placement using mallets.
- Helps prevent mower damage by completely driving into the soil.
- Less chance of bending or jamming like traditional U-shaped staples.
- Holds more netting strands than a typical U-shaped staple.
- Allows easy visual inspection by engineer, superintendent or inspector.
- Provides more surface holding power than a staple.
- Will drive easily into hard clay due to the incredible force that the 2.8 lb. plunger provides to the center driven pin.

## PACKAGING AND SPECIFICATIONS

- 6" x 11ga. 1000/carton 33 lbs.
- 8" x 11ga. 1000/carton 44 lbs.
- 6" x 8ga. 500/carton 32 lbs.
- 8" x 8ga. 500/carton 35 lbs.

**DRIVE YOUR INSTALLATION PROBLEMS AWAY**